

Classes/ Section	Total Number of Questions	Duration	Total Marks	Marking
For classes 1 to 5 Two Section	40	1 Hour	200	No Negative Marking
Section 1 : Science	20	30 Mins	100	No Negative Marking
Section 2 : Maths	20	30 Mins	100	No Negative Marking

SYLLABUS

Class 4th

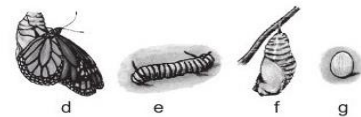
Section I Science : Plants, Animals, Food and Digestion, Human Needs, Matter and Materials, Force, Work and Energy, Our Environment, Earth and Universe.

Section II Maths : Numerals and Number Names, Number Sense (more than 4-digit numbers), Computation Operations, Fractions, Length, Weight, Capacity, Time, Money, Geometry, Perimeter of Various Shapes, Symmetry, Conversions, Data Handling.

Section 1 : Science

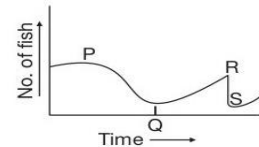
1. The given pictures show the developmental stages of a butterfly arranged randomly. Select the stage of its life cycle during which it is (a) most active eater, and (b) least active.

- (a) (b)
 (A) d g
 (B) e f
 (C) d e
 (D) f g

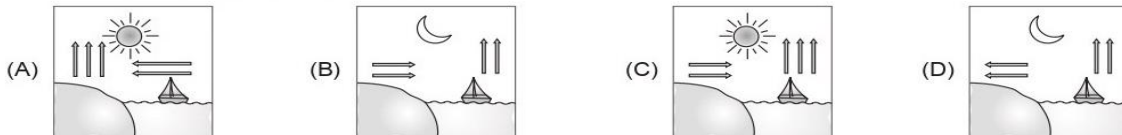


2. The given graph shows the amount of changes in the number of fish in a water body in a year. Select the INCORRECT option regarding this.

- (A) At time P, some factory was established near the water body that discharged its used water in it.
 (B) At time Q, the factory was relocated to some other part, away from the water body.
 (C) At time R, large amount of oil was accidentally spilled into the water body.
 (D) At time S, a new factory was established near the water body.



3. Which of these illustrates sea breeze?



4. _____ is an imaginary line that runs from North Pole to the South Pole. It is tilted at an angle of 23.5 degrees.
 (A) Equator (B) Axis (C) Orbit (D) None of these

5. The food prepared by the leaves is used by the plants for their daily activities. The excess food gets stored as starch in _____.
 (A) Roots (B) Stems (C) Fruits (D) All of these

6. Refer to the given conversation.

Meetu : Mummy, please stitch a cotton frock for my doll.

Mother : Sure Meetu ! She must be feeling _____ wearing woollens in _____ .

Select the correct option to fill the blanks in the above conversation.

- (A) Hot, summer (B) Cold, summer (C) Wet, winter (D) Cold, winter

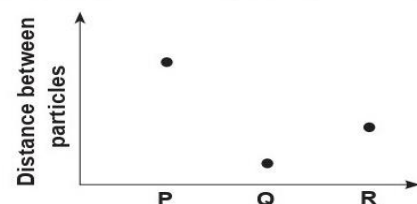
7. The given graph shows the distance between the particles in three samples (P, Q and R) having water in different states of matter.

Which of the following will NOT have

X – Fixed shape only

Y – Fixed shape and volume?

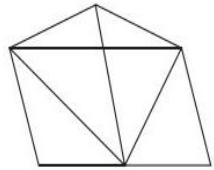
- X Y
 (A) R Q
 (B) R P
 (C) P Q
 (D) P R



Section 2 : Maths

8. How many triangles are there in the given figure?

(A) 11
(B) 12
(C) 10
(D) 14



9. Some letters are given which are numbered 1, 2, 3, 4, 5 and 6 followed by four options containing combinations of these numbers. Find the combination of numbers so that letters are arranged accordingly to form a meaningful English word.

N O L E D G
1 2 3 4 5 6

(A) 6, 2, 3, 5, 4, 1 (B) 5, 4, 1, 6, 2, 3 (C) 3, 4, 1, 6, 5, 2 (D) 1, 6, 5, 4, 3, 2

10. Difference between the place values of 4 and 5 in the number given below is ____.

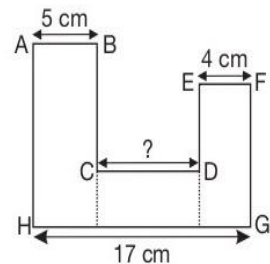
409500

(A) 1 (B) 399500 (C) 39500 (D) 39590

11. The given figure is made up of three rectangles.

Find the length of CD.

(A) 10 cm
(B) 7 cm
(C) 8 cm
(D) 13 cm

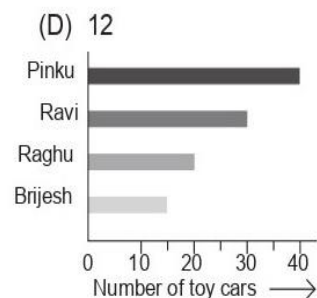


12. How many multiples of 10 are there from 20 to 150?

(A) 13 (B) 14 (C) 15

Pinku, Ravi, Brijesh and Raghu are friends. The graph shows the number of toy cars each of them have. What can we conclude from the given graph?

(A) Brijesh has one-third the number of toy cars Pinku has.
(B) Three children have more than 20 toy cars.
(C) Ravi has twice as many toy cars as Brijesh has.
(D) Brijesh has 1 toy car less than Raghu.



13. The flight from Chennai to Dubai took off at 4:45 hours. It landed in Dubai at 9:15 hours. How long was the flight?

(A) 4 hrs 50 mins (B) 3 hrs 55 mins (C) 4 hrs 30 mins (D) 4 hrs 10 mins

14. The total number of children in a class is 40. 7 children were absent on Monday. What fraction of total children were present on Monday?

(A) $\frac{7}{40}$ (B) $\frac{33}{40}$ (C) $\frac{40}{7}$ (D) $\frac{40}{33}$