

Classes/ Section	Total Number of Questions	Duration	Total Marks	Marking
For classes 1 to 5 Two Section	40	1 Hour	200	No Negative Marking
Section 1 : Science	20	30 Mins	100	No Negative Marking
Section 2 : Maths	20	30 Mins	100	No Negative Marking

SYLLABUS

Class 2nd

Section I Science : Plants, Animals, Human Body, Food, Housing and Clothing, Family and Festivals, Good Habits and Safety Rules, Transport and Communication, Air, Water and Rocks, Earth and Universe.

Section II Maths : Numerals, Number Names and Number Sense (3-digit Numbers), Computation Operations, Length, Weight, Capacity, Time, Temperature, Money, Lines, Shapes and Solids, Pictographs, Patterns.

Section 1 : Science

1. The given figure shows a black box containing an object. Kunal put his hand into the box and made the following comments.

It is cold.

It is rough.

It is hard.

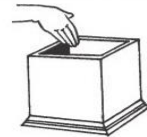
Which sense organ did Kunal use to make these descriptions?

(A) Ear

(B) Skin

(C) Tongue

(D) Nose



2. My father's nephew or niece is my

(A) Cousin

(B) Uncle

(C) Aunt

(D) Brother-in-law.

3. We wear _____ clothes in winter to keep ourselves warm.

(A) Cotton

(B) Nylon

(C) Woollen

(D) Silk

4. Which part of the given plant makes food?



(A) P

(B) S

(C) Q

(D) R

5. Which of the following modes of transport is pulled by animals ?

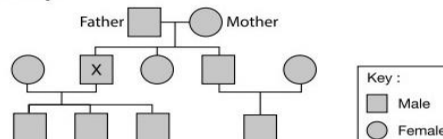
(A) Cycle

(B) Tonga

(C) Jeep

(D) Car

6. Study the given family tree carefully.



7. How many nephews does 'X' have?

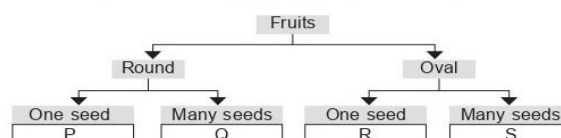
(A) Three

(B) Four

(C) One

(D) None

8. Study the given flow chart carefully. In which group (P, Q, R and S) fruit of kiwi can be placed?



(A) P

(B) Q

(C) R

(D) S

Section 2 : Maths

9. Mini had ₹ 560 in her purse. When she went shopping, she spent ₹ 456. How much money was left with her?
 (A) ₹ 4 (B) ₹ 24 (C) ₹ 104 (D) ₹ 140

10. Find the value of ♥, ☾ and 😊 respectively. (Each shape stands for a digit.)

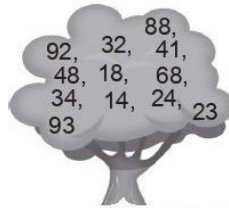
$$\begin{array}{r}
 \text{♥} \\
 \text{☾} \quad \text{☾} \\
 + \text{😊} \quad \text{😊} \quad \text{😊} \\
 \hline
 9 \quad 4 \quad 3
 \end{array}$$

- (A) 5, 1, 3 (B) 1, 3, 5 (C) 5, 4, 3 (D) 9, 4, 3
11. Sonia buys 4 apples, 2 mangoes and 5 tomatoes from the market.



How much money will she have to pay?

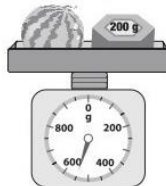
- (A) ₹ 142 (B) ₹ 140 (C) ₹ 130 (D) ₹ 128
12. How many numbers are there in the tree which has sum of their digits as 5?



- (A) 3 (B) 4 (C) 5 (D) 6
13. Which of the following is less than 13 tens + 2 ones ?

- (A) 142 (B) 132 (C) 138 (D) 123

14. What is the weight of the watermelon shown in the figure?



- (A) 300 g (B) 550 g (C) 250 g (D) 350 g
15. In a box, there are 25 blue marbles, 18 red marbles and 27 yellow marbles. How many marbles are there in the box altogether?

- (A) 50 (B) 60 (C) 70 (D) 80